



Cable ID: 12 CORE SMOF

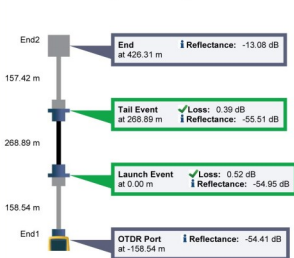
Date / Time: 06/01/2016 03:18:58 PM
Cable Type: OS2 Singlemode

n = 1.4670 (1310 nm)
n = 1.4680 (1550 nm)

Test Summary: PASS

Backscatter Coefficient: -79.5dB (1310 nm)
Backscatter Coefficient: -82.0dB (1550 nm)

OTDR Bidir. Avg. EventMap



Fiber Length: 268.89 m
Overall Loss: 0.98 dB

OTDR Bidir. Avg. PASS

Test Limit: ISO/IEC 14763-3:2014
Limits Version: 4.6
Date / Time: 06/01/2016 10:14:01 AM
Operator:
Tester: OptiFiber Pro (3226934 V4.6 Build 2)
Module: OFF-QUAD (3317504)
Calibration Date: 11/23/2015

Launch + Tail
Launch/Tail Type: Singlemode
Launch Length : 158.54 m
Tail Length : 157.42 m
Compensation Date: 06/01/2016 09:30 AM

Overall Results	1310 nm	1550 nm	Limit
Overall Length (m)	268.89		5000.0
Overall Loss (dB)	0.98	0.82	1.61
ORL (dB)	45.20	47.22	

Settings (Auto OTDR) 1310 nm 1550 nm
Auto OTDR
Range (Auto) 682 m 684 m
Resolution (Auto) 0.03 m 0.03 m
Pulse Width (Auto) 30 ns 30 ns
Averaging Time (Auto) 2 s 16 s
Loss Threshold (Auto) 0.10 dB 0.10 dB
End Threshold (Auto) 0.00 dB 0.00 dB

Events	Loss (dB)			Reflectance (dB)			Attn Coeff (dB/km)		
	1310 nm	1550 nm	Limit	1310 nm	1550 nm	Limit	1310 nm	1550 nm	Limit
426.31 m End	N/A	N/A		-13.08	-13.84		0.30	0.36	
268.89 m Tail Event	0.39	0.33	0.75	-55.51	-56.23		0.31	0.18	
0.00 m Launch Event	0.52	0.45	0.75	-54.95	-55.26		0.33	0.24	
-158.54 m OTDR Port	N/A	N/A		-54.41	-55.00		N/A	N/A	



Cable ID: 12 CORE SMOF

Date / Time: 06/01/2016 03:18:58 PM
Cable Type: OS2 Singlemode

n = 1.4670 (1310 nm)
n = 1.4680 (1550 nm)

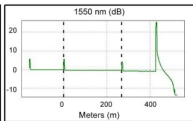
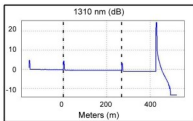
Test Summary: PASS

Backscatter Coefficient: -79.5dB (1310 nm)
Backscatter Coefficient: -82.0dB (1550 nm)

OTDR End1

Test Limit: ISO/IEC 14763-3:2014
Limits Version: 4.6
Date / Time: 06/01/2016 09:52:20 AM
Operator:
Tester: OptiFiber Pro (3226934 V4.6 Build 2)
Module: OFF-QUAD (3317504)
Calibration Date: 11/23/2015

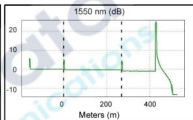
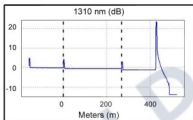
Launch + Tail
Launch/Tail Type: Singlemode
Launch Length : 158.54 m
Tail Length : 157.42 m
Compensation Date: 06/01/2016 09:30 AM



OTDR End2

Test Limit: ISO/IEC 14763-3:2014
Limits Version: 4.6
Date / Time: 06/01/2016 10:14:00 AM
Operator:
Tester: OptiFiber Pro (3226934 V4.6 Build 2)
Module: OFF-QUAD (3317504)
Calibration Date: 11/23/2015

Launch + Tail
Launch/Tail Type: Singlemode
Launch Length : 158.54 m
Tail Length : 157.42 m
Compensation Date: 06/01/2016 09:30 AM



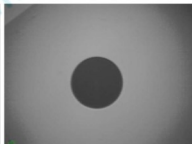
**Endface Image End1
PASS**

Date / Time: 06/01/2016 03:18:58 PM
Test Limit: IEC 61300-3-35 ED.1 MM
Limits Version: 4.6
Operator:
OptiFiber Pro (3226934 V4.6 Build 2)

End1



End2



**Endface Image End2
PASS**

Date / Time: 06/01/2016 02:17:52 PM

**Loss (R->M)
PASS**

Date / Time: 06/01/2016 09:17:40 AM
Test Limit: ISO/IEC 14763-3:2014
Limits Version: 4.6
Operator:
CertiFiber Pro (3226934 V4.6 Build 2)
Module: CFP-QUAD(3349003)
Calibration Date: 12/06/2015
certifiber pro remote (3304138 v4.6 build 2)
Module: CFP-QUAD(3349004)
Calibration Date: 12/06/2015

Propagation Delay (ns)	1299	
Length m	265.3	PASS
Limit 5000.0		
	1310 nm	1550 nm
Result	PASS	PASS
Loss (dB)	0.31	0.23
Limit (dB)	2.21	2.21
Margin (dB)	1.90	1.98
Reference (dBm)	-2.89	-3.01

Number of Adapters: 2
Number of Splices: 2
Connector Type: LC
Patch Length1 (m): 2.0
Reference Date: 06/01/2016 07:23:34 AM
1 Jumper